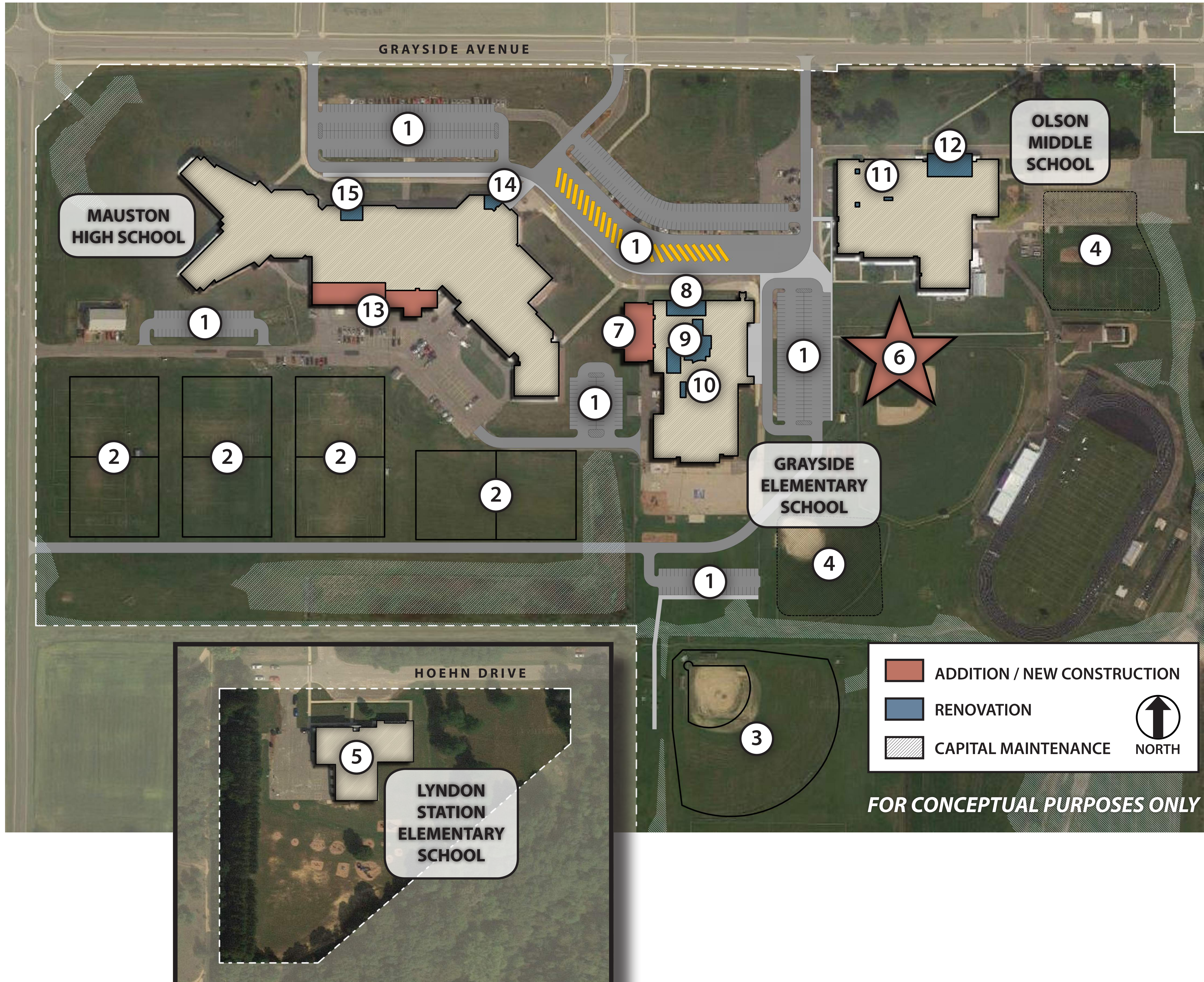




SCHOOL DISTRICT OF MAUSTON



SITE IMPROVEMENTS

- 1 Improve site drainage and traffic flow for safety
- 2 Improve practice fields
- 3 Relocate Varsity and JV baseball fields due to construction of new elementary
- 4 Upgrade playground areas and equipment

LYNDON STATION

- 5 Capital maintenance improvements

NEW ELEMENTARY SCHOOL

- 6 Build new Elementary School (Grades 4K, K, 1-2, and Montessori)

GRAYSIDE ELEMENTARY SCHOOL

- 7 Classroom addition with collaborative learning spaces
- 8 Reconfigure existing classrooms to provide greater learning opportunities and collaborative environments
- 9 Expand Library and upgrade Makerspace
- 10 Expand cafeteria serving area to increase kitchen space and improve service flow

OLSON MIDDLE SCHOOL

- 11 Upgrade restrooms for accessibility
- 12 Upgrade equipment and finishes in Auditorium

MAUSTON HIGH SCHOOL

- 13 Addition for Technical Education, Agriculture, Art, Fabrication Lab, and Greenhouse
- 14 Renovate main office with secure entrance
- 15 Renovate existing spaces to expand iLEAD Charter School

**Note: Capital Maintenance items to be addressed at existing schools.*